

SERIES
STAR 2000
Mo Series
APS x-B-x0
APS x-B-xP
ver. 11/02

Date: 10.02.2003

For further questions please contact:

ACP&D Limited
Unit 9A, Charlestown Industrial Estate,
Robinson Street, Ashton-under-Lyne, Lancashire, OL6 8NS, England.
Phone: +44 (0)161 343 1884 Fax: +44 (0)161 339 0650
E-mail: sales@acpd.co.uk

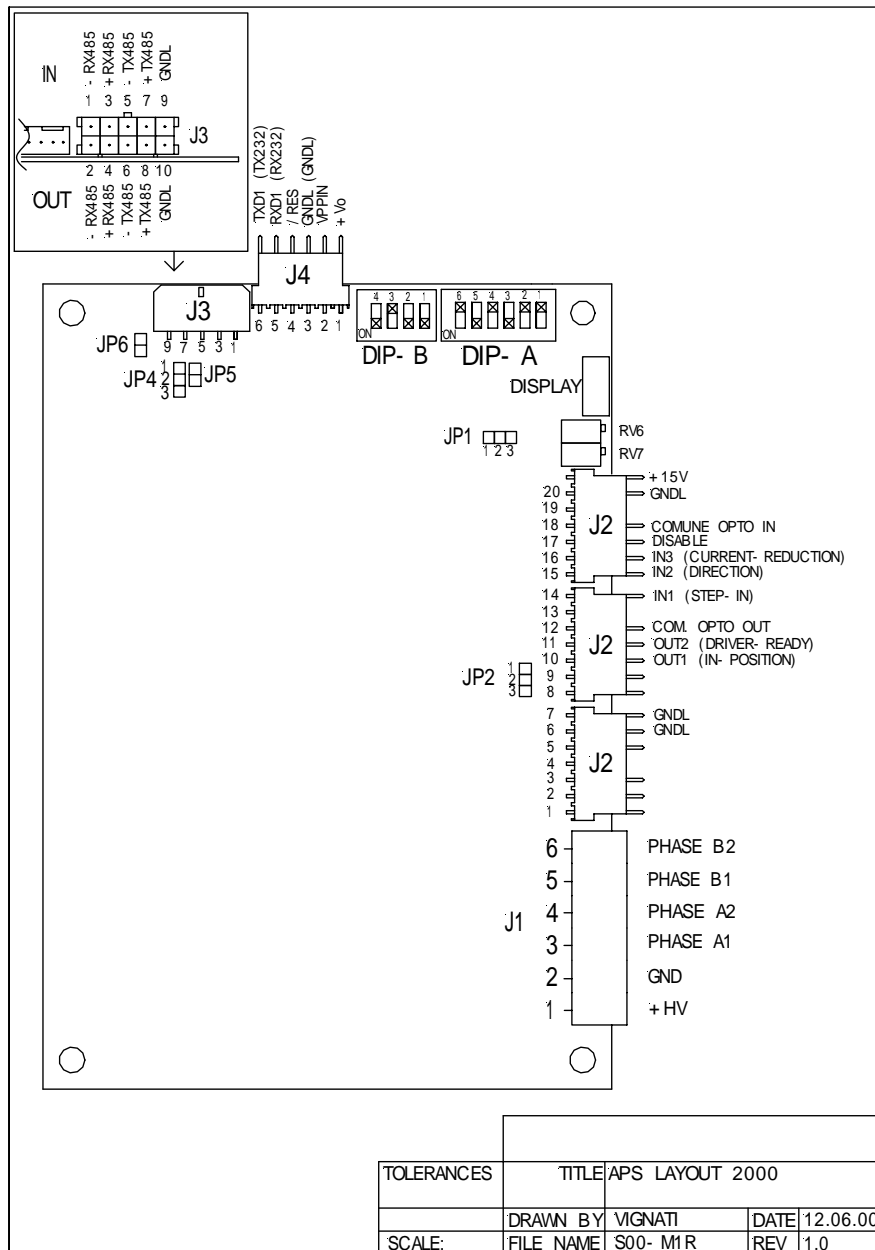
INDEX:

1. APS without power supply	Pag. 4
1.1 Power supply	
2. APS with power supply	Pag. 6
2.1 Power supply	
3. Mechanical dimensions	Pag. 8

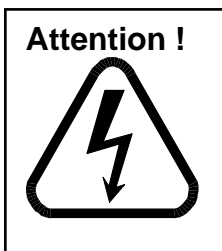
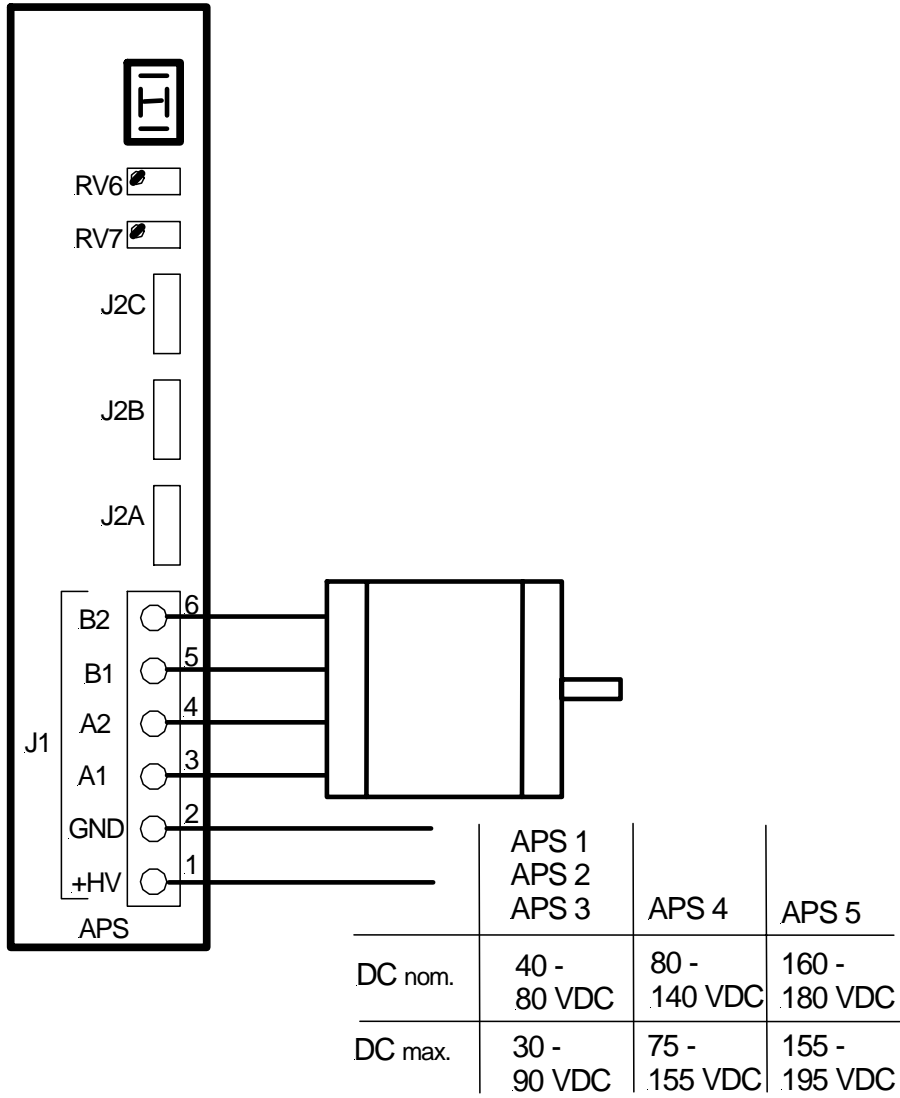
1. APS without power supply

TYP: APS x - B – x0

Layout without power supply



1.1 Supply voltage

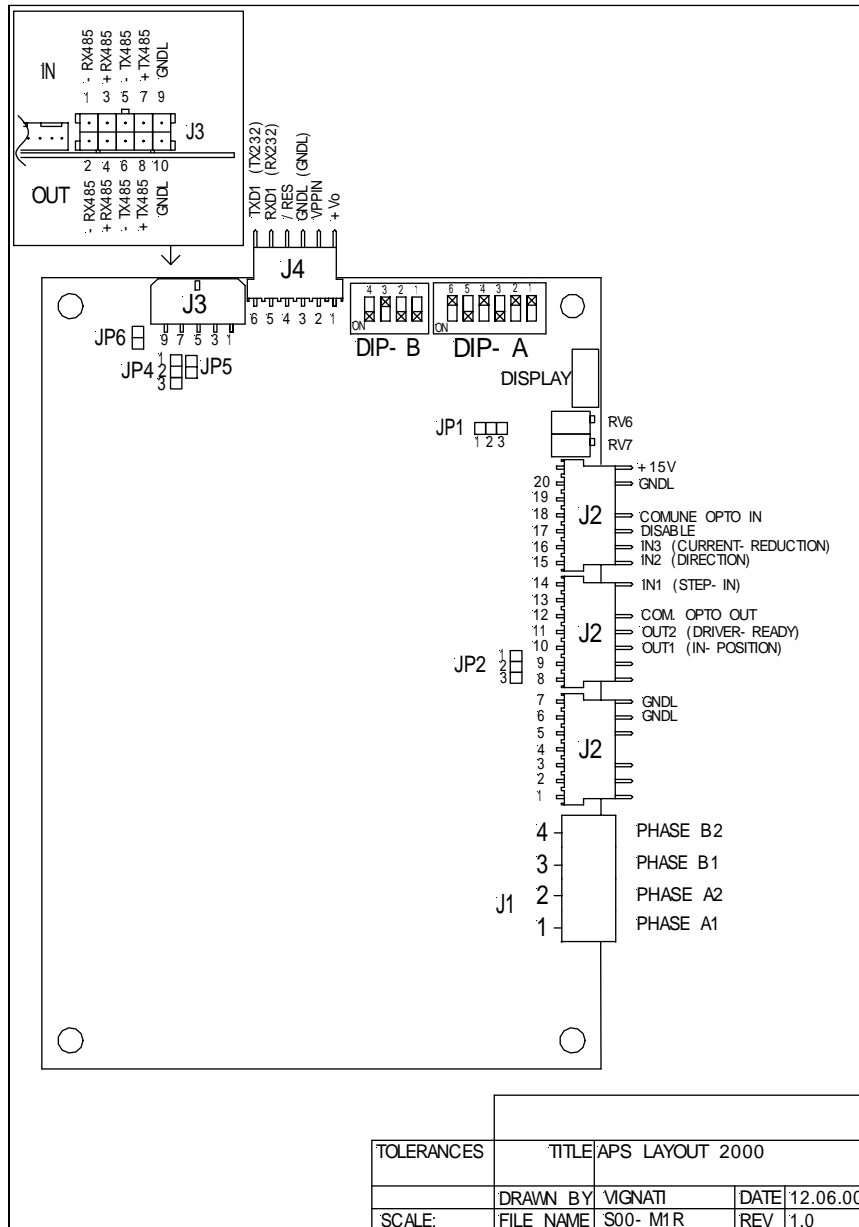


Don't ground the minus pol of the DC power supply.

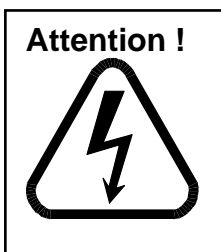
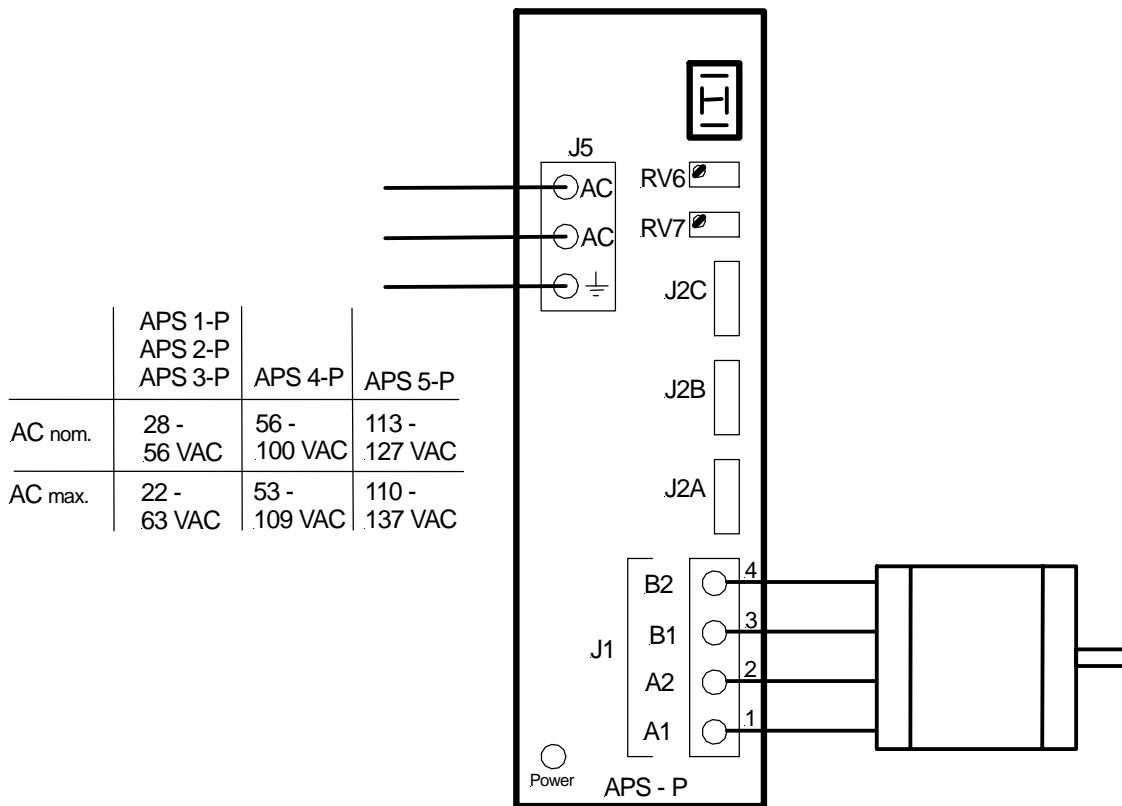
2. APS with power supply

TYP: APS x - B – xP

Layout with power supply



2.1 Supply voltage



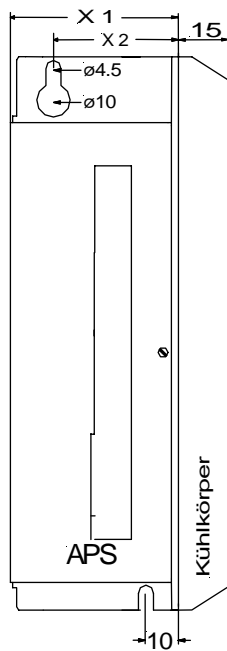
ONLY USE TRANSFORMERS WITH ISLOATED OUTPUTS

Non-isolated transformers **WILL CAUSE DAMAGE TO THE Star2000!**

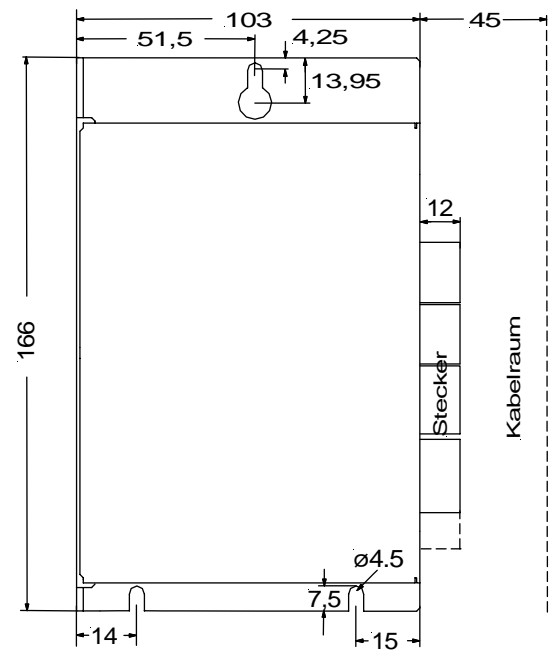
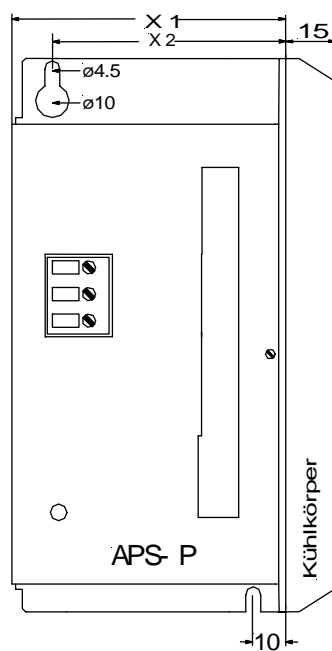
(i.e. no economy transformer must be used!).

3. Dimensions

APS 1-5 - B - x 0
without power supply



APS 1-5 - B - x P
with power supply



1) necessary if current > 6 A

	APS 1	APS 2	APS 3	APS 4	APS 5	APS 1-P	APS 2-P	APS 3-P	APS 4-P	APS 5-P
X1 [mm]	36	36	36	36	36	61	61	61	61	61
X2 [mm]	25	25	25	25	25	49	49	49	49	49
Kühlkörper	-	-	1)	yes	yes	-	-	1)	Yes	yes